

Patients Against Lymphoma



Patients helping Patients

1305 Mason Avenue
Staten Island, NY 10306

Phone: 718-980-0635 | Fax: 801-409-5736
KarlS@Lymphomation.org
www.Lymphomation.org

We are guided by our scientific advisors, the peer-reviewed literature, medical professionals fighting lymphoma, and **patient questions . . .**

We continuously improve our website in response to visitor questions and **patient needs . . .**

by linking you directly to reputable sources of information, such as ClinicalTrials.gov.

Visit us at
www.Lymphomation.org

Lymphomation.org

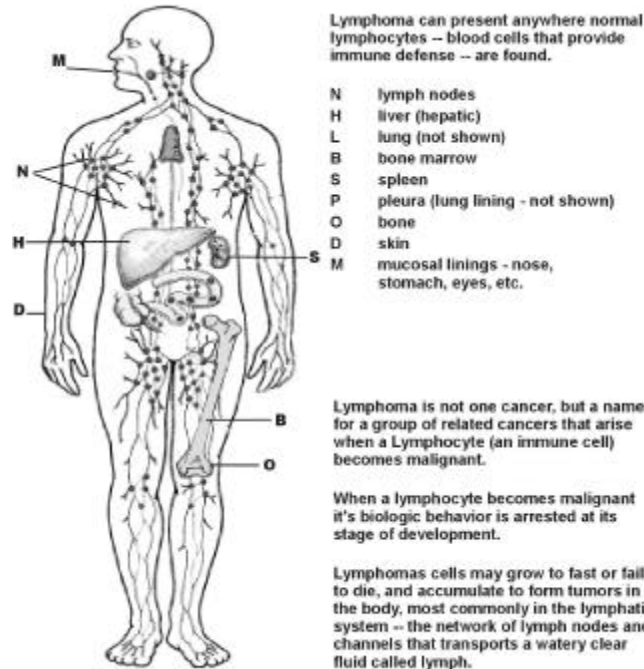
[About Lymphoma](#) | [Advocacy & Art](#) | [CAM](#) | [Clinical trials](#)
[Doctors](#) | [Guidelines at diagnosis](#) | [How to Help](#) | [Research](#)
[Side Effects](#) | [Support](#) | [Tests & imaging](#) | [Treatments](#) | [WebCasts](#)

What's Lymphoma?

Lymphoma is a **cancer** that affects **blood cells** called **lymphocytes** – immune cells that normally protect you from illness.

Damage to genes in these cells can sometimes lead to **abnormal cell behavior** which makes the cells immortal – unable to die when they should – or causes sustained rapid cell division..

These malignant cells then may accumulate to form **tumors** that enlarge the lymph nodes or spread to other areas of the **lymphatic system**, such as the spleen or bone marrow, or outside the lymphatic system to the skin, or mucosal linings of the stomach.



Lymphoma is a systemic cancer – note the wide possible range of presentation.

WHAT'S LYMPHOMA?

Symptoms & Risk Factors

The Burden of Lymphoma

Celebrities and Notables Diagnosed with Lymphoma



Symptoms & Risk Factors

While the following symptoms of lymphoma are associated with many benign conditions, anyone experiencing them, especially if persistent or recurring, should be seen by their doctor.

Common Symptoms

- Persistent fevers or chills
- Drenching night sweats
- Painless swelling of lymph nodes
- Persistent skin rashes and itching
- Unexplained fatigue
- Unexplained weight loss

Factors Thought to Increase Risk:

- Chronic infection
- Depressed immunity
- Chemical exposure – pesticides, cancer therapies, herbicides . . .
- Viral exposures

The Burden of Lymphoma

Only 45% of patients with aggressive non-Hodgkin's lymphomas will be cured with standard treatments, ...

and almost all indolent lymphomas remain incurable, unless diagnosed early and treated with radiotherapy when the disease is localized.

The less-common Hodgkin's lymphoma is curable about 80% of the time.

Each day approximately 170 Americans are diagnosed with lymphoma, and 75 die of the disease.

This year it's estimated that 63,000 individuals will be diagnosed with lymphoma, in the USA, and that 24,000 will die.

Lymphoma is the most commonly occurring blood cancer, and is the third most common childhood cancer.

The incidence rate of individuals diagnosed with non-Hodgkin's Lymphoma (NHL) each year has doubled since the 1970s, and has increased 4% annually.

NHL is the second fastest rising cancer in incidence and death rates in the United States. [Adapted from SEER 2001]

For details on Lymphoma statistics visit:

www.Lymphomation.org/statistics.htm

Celebrities and Notables Diagnosed with Lymphoma

Paul Azinger – Professional golfer

Laurie Shaffer Bottoms – Author, educator, and founding executive director of Kentucky's Carnegie Center for Literacy and Learning

William Casey – Former head of the CIA

Edward E. Crutchfield – Chairman and chief executive of First Union Corp

John Cullen – Professional hockey player

Rich Dambakly – Finished Iron-man USA Lake Placid in July while fighting Lymphoma.

Gwen Darien – Editor and publisher of MAMM magazine - magazine is for women with breast and ovarian cancer

Jerry Freundlich – While fighting Lymphoma, founded the Cure for Lymphoma Foundation.

Andres Galarraga – Baseball player for the Atlanta Braves

Tim Garton – Inducted into the International Swimming Hall of Fame as an Honor Masters Swimmer in 1997 was diagnosed with an incurable form of Lymphoma in 1991.

Dick Gregory – Civil rights activist and comedian

Arte Johnson – Comedian on Laugh-In

Leshon Johnson – Former football player for the NY Giants

Lauren Hart – Singer

King Hussein of Jordan – World Leader

Mark James – Former European Ryder Cup captain

Ray Katt – Former Major League catcher.

Saku Koivu – Hockey player and captain of the Montreal Canadiens

Mario Lemieux – Professional hockey player

Charles A. Lindbergh – Famous aviator

Charles Lowe – Actors Rob Lowe's father

Clarence Lightner – Raleigh's first and only black mayor

Larry Lucchino – President of Diego Padres

Louis Malle – Actress Candice Bergen's husband

Jeff MacNelly – Pulitzer Prize-winning "Shoe" cartoonist

Mickey Mantle, Jr. – Son of New York Yankee baseball great

Roger Maris – New York Yankee baseball great

Gabriel Garcia Marquez – Colombian Nobel Prize-winning author

Dave Marshall Jr. – Assistant boys' basketball coach at Royal High

Judith Campos McKeenan – Attorney; first woman to serve as president of the Sacramento County Bar Association

Loonis McGeohon – Composer, and entrepreneur

Jackie Kennedy Onassis – Former First Lady of the United States

Judge Jerry R. Parker – Served on the 2nd District Court of Appeal since 1987

Jim Patterson – Former Fresno Mayor

Sister Ida Peterfy – Founded order of nuns

Sarah Pettit – Helped found the nation's largest gay magazine

Bob Pohl – Republican Party's candidate for 35th District Assembly (CA)

Joey Ramone – Musician

Steve Reeves – Former Mr. Universe; actor

Glen S. Rosengarten – Executive; helped develop food supermarket chain Food Emporium.

Dan Rowan – Comedian; known for Rowan and Martin's Laugh-In

Jim Ryan – Republican nominee for Governor of Illinois

Joe Shapiro – Former general counsel for Walt Disney

Cliff Schrock – Sportscaster of British Open

Mr. T (Laurence Tureaud) – Actor

Paul E. Tsongas – Candidate for president of the United States of America

Susan Vreeland – Novelist

Gene Wilder – Comedian; helped found the Gilders club

Marvin Wood – College basketball coach

Our Heroes

The numerous patients & Caregivers who provide encouragement and share what they have learned with others diagnosed with the disease.

Clinical trial participants – All who have enrolled in studies so that progress can be made against the disease!

Jama Beasley – When her dire prognosis was reversed by immunotherapy, she dedicated her time and skills to encouraging and supporting other patients.

Ellen Cohen – While fighting Lymphoma, founded the Lymphoma Research Foundation.

Greg Dafoe – Greg has dedicated his time and skills to providing support and inspiration to others with the disease on the Cyberfamily support group and website.

Carol Lee – Educator. While fighting Lymphoma, she continues to dedicate her time to providing support and inspiration to others with the disease.

Janet Nightengale – While fighting Lymphoma, she tirelessly dedicated her time to providing support and inspiration to others with the disease.

Neil Ruzic – Chronicled his experiences fighting Lymphoma in his book "Racing for a Cure"; founded Project Indolence.